

robuARM - S6.2

6 DOF anthropomorphic arm for mobile platforms

product code # 126 200 200 robuARM - S6.2



The robuARM - S6.2 is a robotic arm designed to be easily integrated on any mobile platforms, including automated guided vehicles. Its specifications make the robuARM a great tool for mobile manipulation :

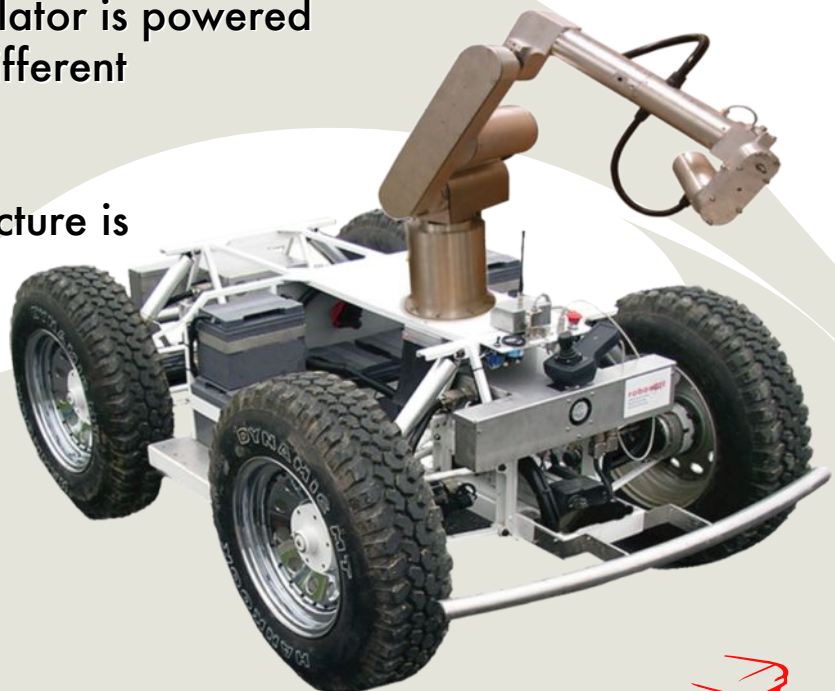
Lightweight less than 40 kg

48V power supply the manipulator is powered directly by the platform. No different alimentation needed.

Rugged its mechanical architecture is strong enough to support jerk and heavy weather, even on hard terrain.

Precise +/- 1 mm repeatability

Tough up to 2,5 kg payload



robuARM - 6.2 technical specifications

robosoft

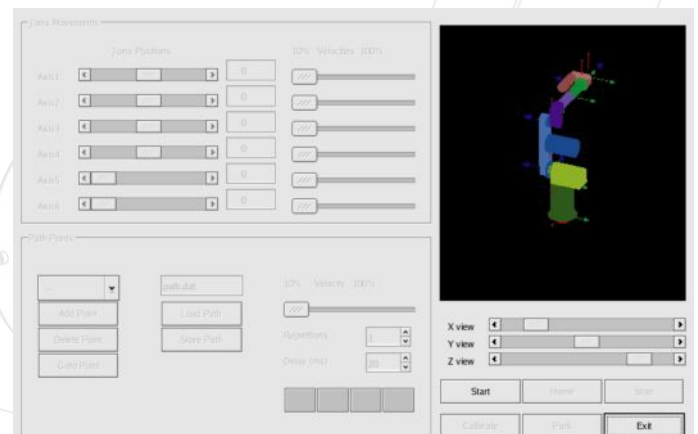
| Axis Movement | Axis Range | Compounded Speed |
|---------------------|-------------|------------------|
| 1: S-axis (turning) | +/- 120° | 150°/s |
| 2: Lower arm | -90°/ +110° | 150°/s |
| 3: Upper arm | +/- 85° | 240°/s |
| 4: R-Axis (wrist) | + /- 120° | 540°/s |
| 5: Wrist pitch | +/- 75° | 360°/s |
| 6: Wrist twist | +/- 130° | 360°/s |

- Load Capacity up to 2,5 Kg at arm extension
- Repeatability +/- 1 mm
- Actuators 3 DC servo motors with closed loop control + 3 Brushless motors
- Arm Weight (including controller) : 40 Kg
- Small footprint for easy integration
- Ambient Operating Temperature 0- 45°C
- Ambient Operating Humidity 20 - 80%
- Weatherized : IP65
- Power Supply : 18-36 VDC - 2A (controller)
48-76 VDC - 50A (power)

Software specifications :



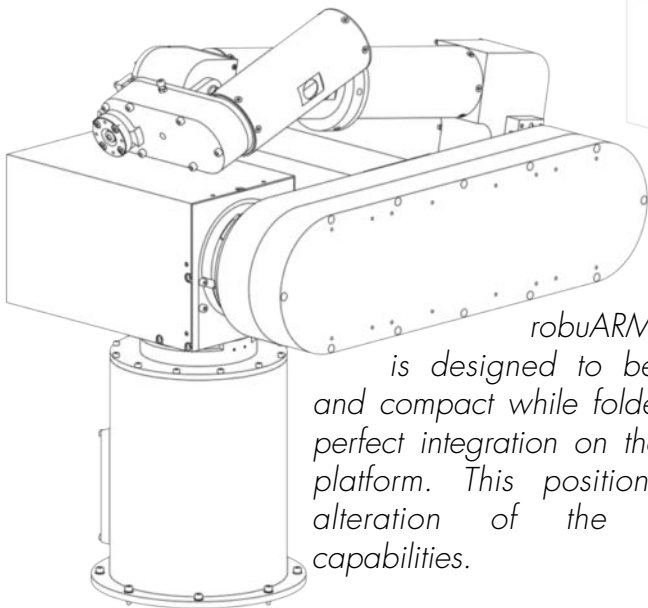
- **C*RE control command technology**
see full documentation at:
<http://www.robosoft.fr/whitepapercoreEN.html>
- Distributed architecture over CAN open
- Easy to use, GUI provided, with:
 - interface for fast sequence programming
 - 3D arm simulator ideal for tele operation



robuARM GUI

Modules and Options:

- **Grippers**
Robosoft range of grippers apply perfectly to the robuARM - S6.2
- **Torque sensor**
6 axis force torque sensor that provides a precise monitoring of forces and movements in all dimensions
- **Vision systems**
Robosoft wide range of vision systems provides the robuARM - S6.2 full integrated vision capabilities.



robuARM - S6.2 is designed to be locked and compact while folded, for a perfect integration on the mobile platform. This position avoids alteration of the platform capabilities.

ROBOSOFT

