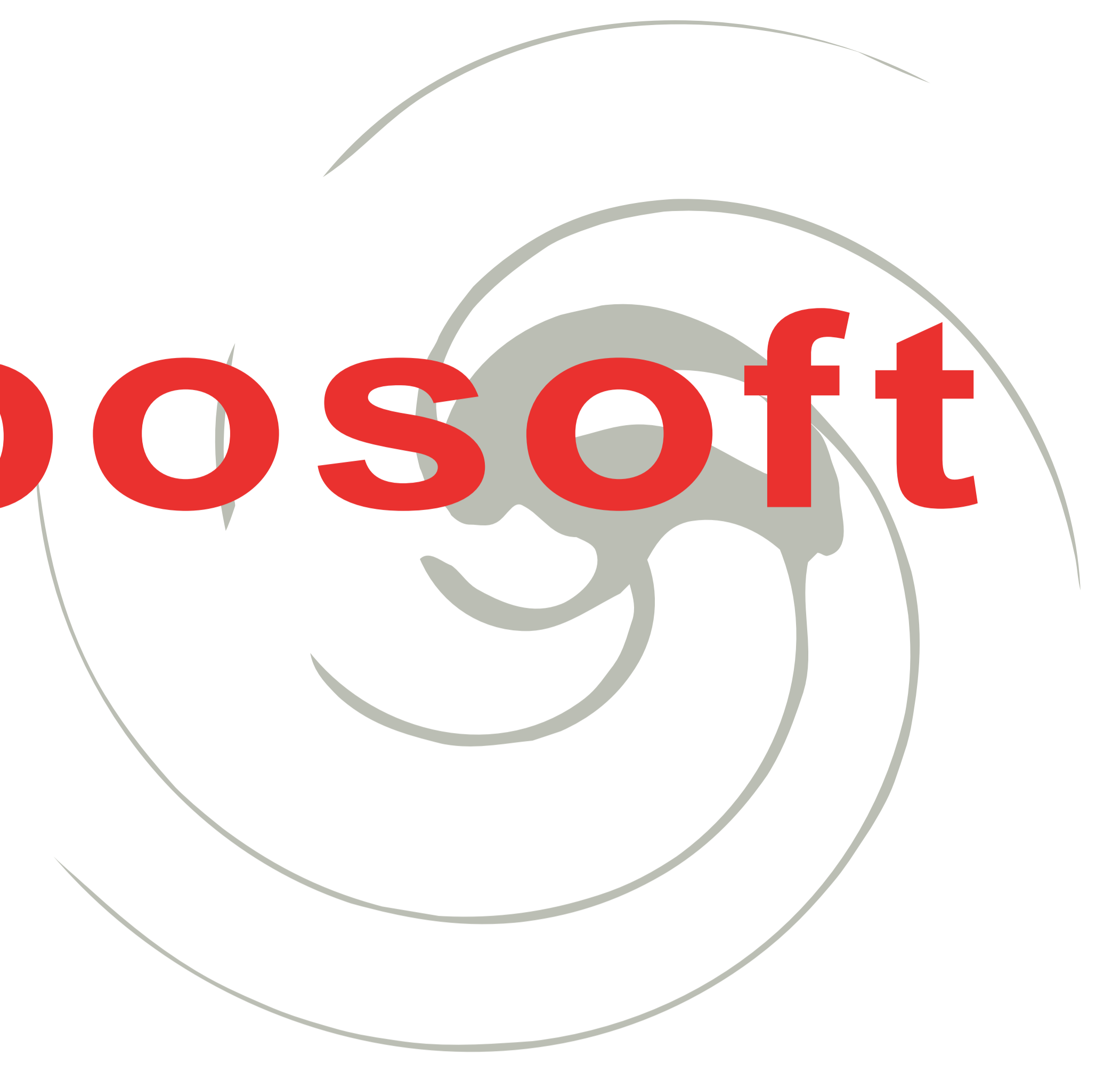
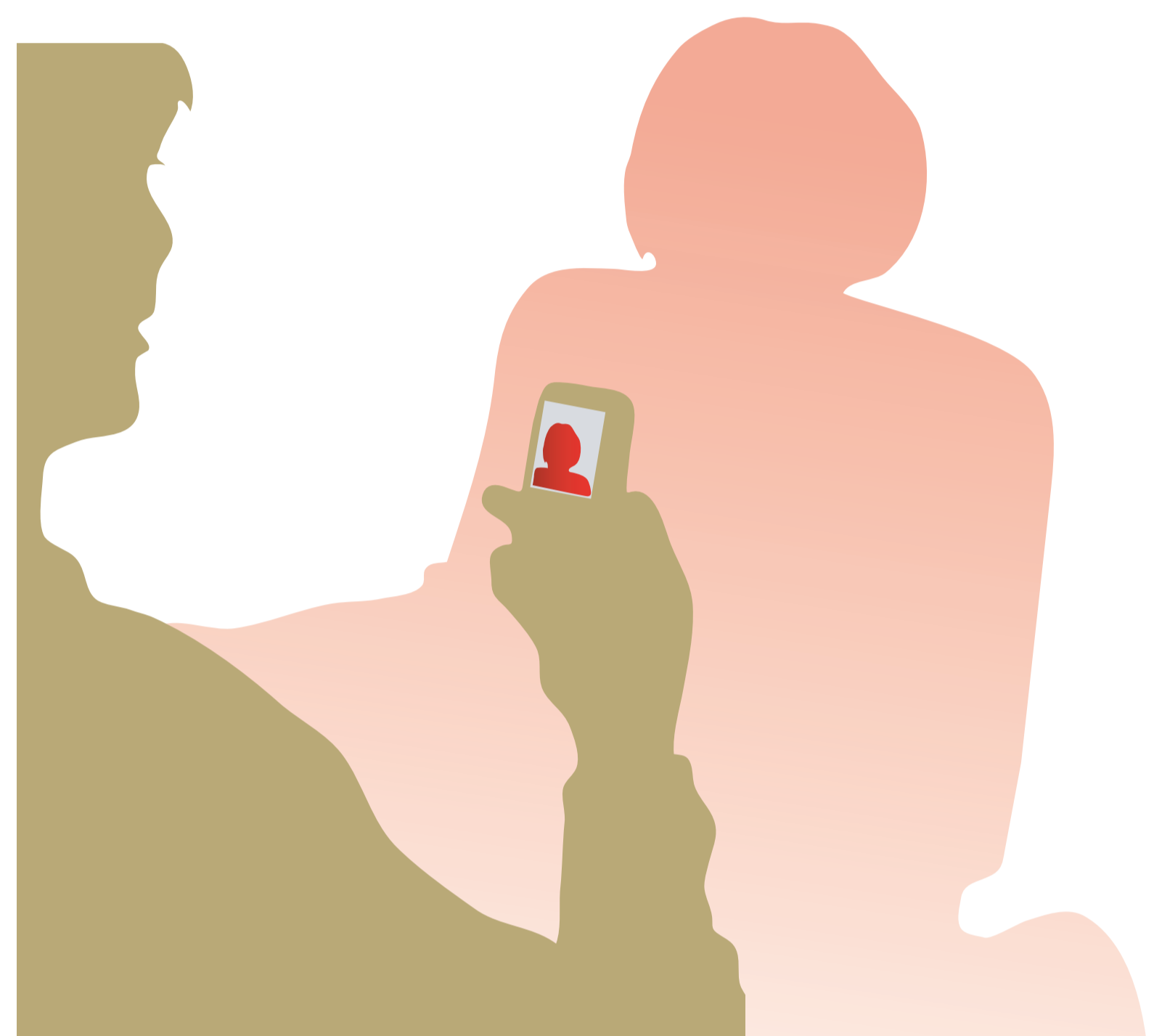


# a new **robuter** by **robosoft**

Based on a robuLAB<sup>10</sup> standard platform, this new robot combines advantages of internet and robots mobility to bring daily life services to people staying at home.



## towards home-centric robots to assist people at home



### **Social interactions**

- with distant people wherever they are
- with your relatives who can remotely visit you



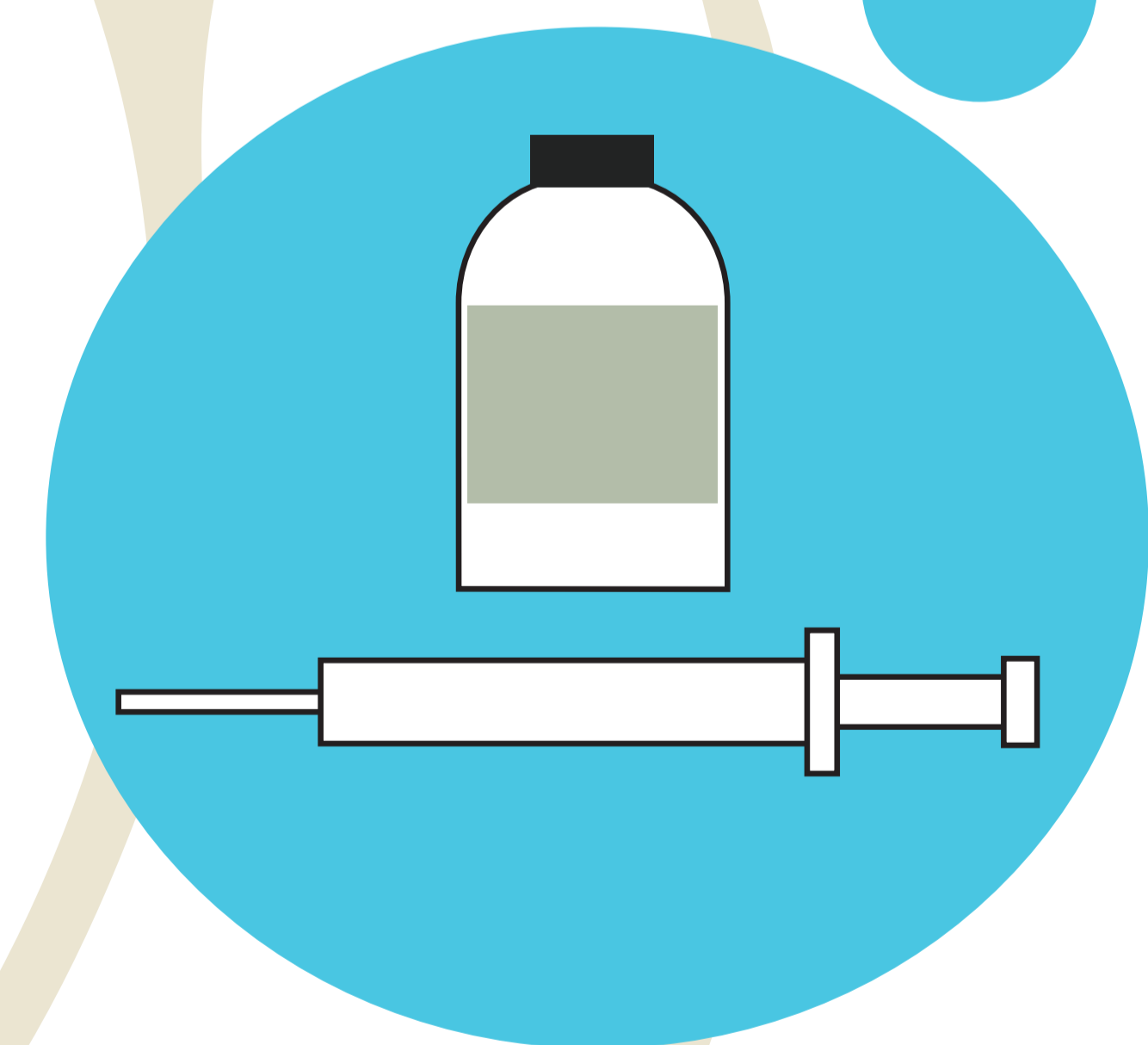
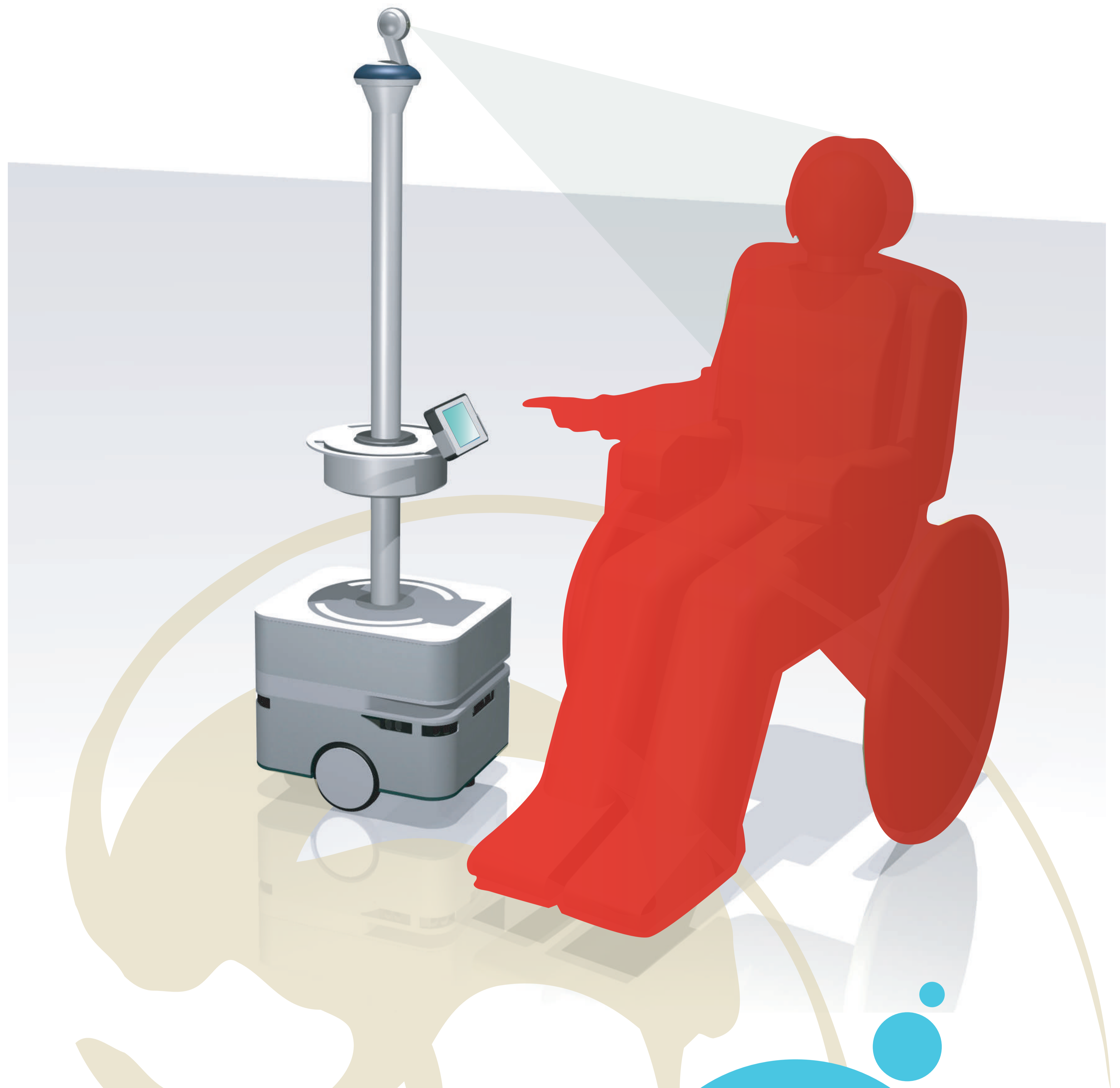
### **Remote telemedicine**

- to allow frequent remote visits by medical doctors while patients stay at home



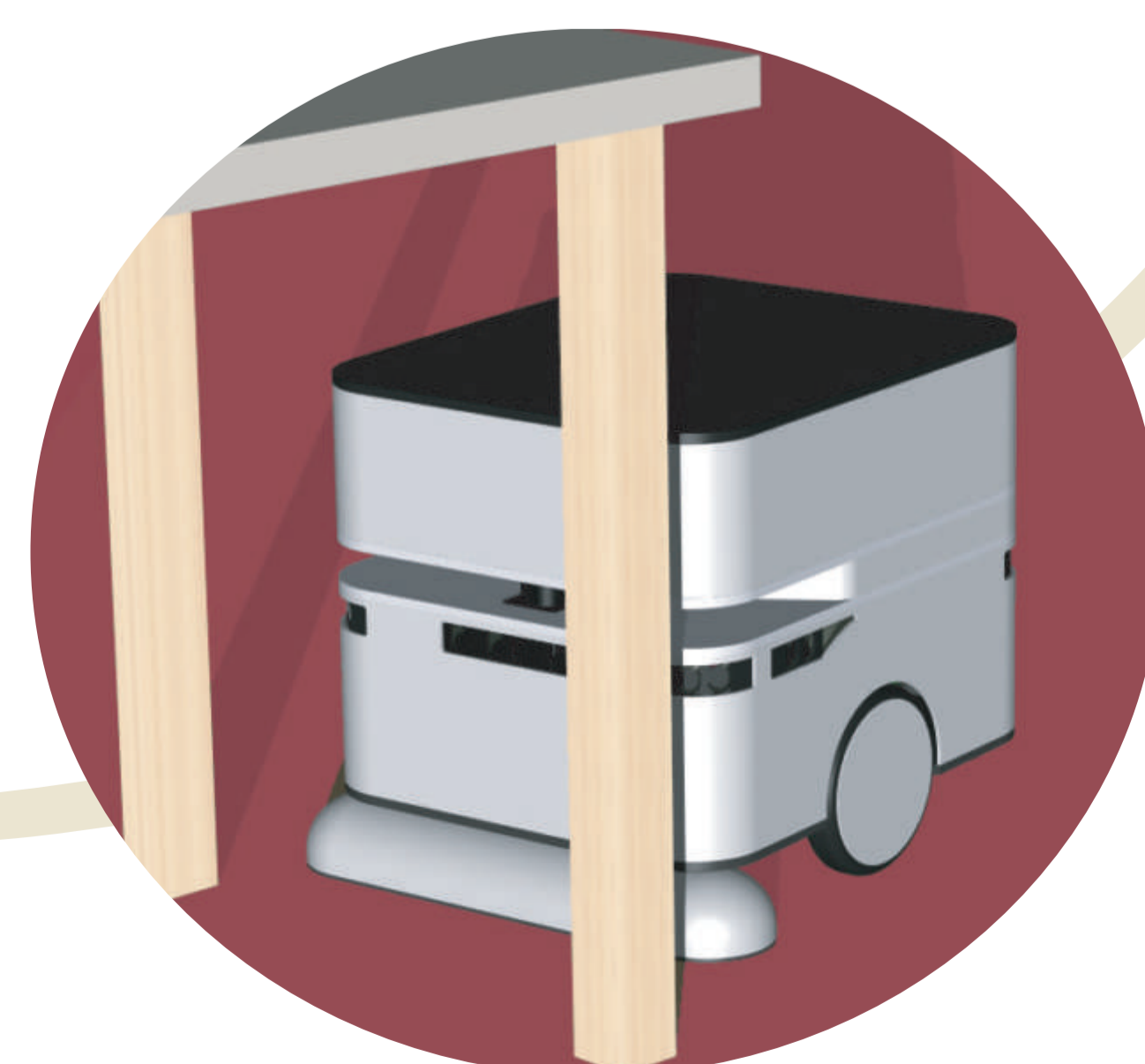
### **Safeguarding**

- check everything is ok
- care for relatives well being
- record house activity



### **Cognitive prosthesis**

- to remind daily activities (medications, bathroom,...)
- to find what's on TV
- like a robotics companion



### **Domestic duties**

- like cleaning and surveillance